

# Senior Pay Policy and Guiding Principles 2022/2023

**Prepared by:** Human Resources

**Date:** January 2022

**For Review:** January 2023



## **CONTENTS**

		<b>Page</b>
<b>1.</b>	<b>Introduction</b>	<b>3</b>
1.1	Legislation	3
1.2	Scope	3
1.3	Context	4
1.4	Definitions	4
<b>2.</b>	<b>Background to Pay and Grading</b>	<b>4</b>
2.1	Whole Workforce	4
2.2	Living Wage	5
2.3	Corporate Leadership Team	5
<b>3.</b>	<b>Senior Management Salaries</b>	<b>6</b>
3.1	Senior Leadership Team Benchmarking	6
3.2	Packages over £100,000	7
3.3	New Corporate Management Team	7
<b>4.</b>	<b>Terms and Conditions</b>	<b>7</b>
<b>5.</b>	<b>Additional Payments</b>	<b>8</b>
5.1	Election Duties	8
5.2	Acting up Payments	8
5.3	Honoraria	8
5.4	Telephone Rental	8
5.5	Car Mileage and Expenses	8
5.6	Other financial benefits	9
<b>6.</b>	<b>Incremental Progression</b>	<b>9</b>
<b>7.</b>	<b>Lowest Paid Employees</b>	<b>9</b>
<b>8.</b>	<b>Relationship between Salaries</b>	<b>9</b>
<b>9.</b>	<b>Pensions</b>	<b>10</b>
9.1	Contributions	10
9.2	Discretions	10
9.3	Re-employment of Employees	11
<b>10.</b>	<b>Payments on Termination of Employment</b>	<b>11</b>
<b>11.</b>	<b>Publication of Information</b>	<b>11</b>
<b>12.</b>	<b>Contact details</b>	<b>12</b>
	<b>Appendices</b>	
<b>A.</b>	<b>Corporate Management Team structure chart</b>	<b>13</b>

# **Senior Pay Policy Statement**

## **1. Introduction**

### **1.1 Legislation**

Section 38 (1) of the Localism Act 2011, requires all local authorities in England and Wales to produce a Senior Pay Policy Statement which is updated on an annual basis.

The Act and supporting statutory guidance provide details of matters that should be included in this statutory pay policy, which must be complied with when setting the terms and conditions of Chief Officers. The policy must be formally approved by full Council each year and published on the Council's website.

In addition, the Department for Communities and Local Government published a revised Local Government Transparency Code on 3 October 2014. The Local Government (Transparency Requirements) (England) Regulations 2014 regulates the Code which sets out the information local authorities are required to publish.

### **1.2 Scope**

This Senior Pay Policy Statement will cover the following areas:

- The principles underpinning the Council's pay policy for the whole of the workforce
- The Council's policy on the level and elements of remuneration for each Chief Officer
- The Council's policy on the remuneration of its lowest-paid employees, along with a definition of 'lowest-paid employees'
- The Council's policy on the relationship between the remuneration of its Chief Officers and other officers
- The Council's policy on other specific aspects of Chief Officers' remuneration
- Information about terms and conditions of service for Chief Officers, particularly those that represent a cost to the Council
- The Council's policy on making discretionary payments on early termination of employment
- The Council's approach to remuneration at all levels to balance the need to secure and retain high-quality employees and avoiding excessive cost to the taxpayer
- The factors that are taken into account in deciding on what point of a scale a recruit is appointed, and by whom any decision is made
- An indication of the percentage rate at which the employer's pension contributions is set
- Information about re-employment of employees in receipt of a local government pension

### **1.3 Context**

Chesterfield Borough Council recognises that, in the context of managing scarce public resources, remuneration at all levels needs to be adequate to secure and retain high quality employees dedicated to delivering public services, whilst at the same time not being unnecessarily generous and excessive.

It is essential that local authorities are able to determine their own pay structures in order to address local priorities and to compete in the local labour market. It is recognised that senior management roles in local government are complex and diverse with managers working in a highly politicised environment where often national and local pressures conflict.

If the council is to maintain its high performance, then it must be able to retain and attract high calibre leaders to deliver the complex agenda.

### **1.4 Definitions**

The term Chief Officer covers the following permanent Senior Leadership roles at Chesterfield Borough Council

- Chief Executive
- Executive Director x 2
- Service Director Finance
- Service Director Digital, HR and Customer Services
- Service Director Economic Growth
- Service Director Leisure, Culture & Community Services
- Service Director Housing
- Service Director Corporate

The newly appointed Service Director Finance commenced in the role in September 2021.

The statutory duties of Head of Paid Service is incorporated into the post of Chief Executive, and the new Service Director Finance carries out the responsibilities of the Section 151 officer. The duties of the Monitoring Officer are incorporated into the post of Regulatory and Local Government Law Manager.

## **2. Background to Pay and Grading**

### **2.1 Whole Workforce**

To secure equal pay within the organisation, the NJC job evaluation scheme was applied to all posts covered by the NJC for Local Government Employees (excluding Chief Officers).

A new grading structure was implemented in 2003 for the whole workforce (excluding Chief Officers and Craft Workers) with negotiations then continuing with the relevant Trade Unions to complete the Single Status exercise.

An equal pay audit was undertaken on all evaluated posts to:

- Analyse the pay arrangements for all the Council employees
- Identify any differences in levels of pay between men and women
- Review the reasons for, and possible causes of, difference in pay, in particular whether these can be attributed to direct or indirect sex discrimination, and
- Identify how to close gaps in pay that cannot be attributed to reasons/causes other than sex discrimination.

The final Pay and Conditions were later agreed in the form of a Local Collective Agreement in November 2007. The actual salary at each point is determined by the National Joint Council (NJC) Pay Award, the last one being awarded as at 1 April 2020 for one year. The cost of living increase due from 1 April 2021 has not yet been agreed at national level for any group of staff. The final pay offer was 1.75% for craftworkers and for NJC it was 2.75% for point 1 and 1.75% for points 2 and above.

## **2.2 Living Wage**

The new legislative requirement to pay the National Living Wage of £7.20 came into force from 1 April 2016. However, the council was committed to paying the Living Wage determined by the Living Wage Foundation and this was implemented from 1 April 2016 at the rate of £8.25 per hour for staff at spine points 12 and below and increased in line with the rate set by the Living Wage foundation each April until April 2019.

From April 2019 the living wage element was removed as the NJC award raised the bottom pay to the level of the National Living Wage, however following the conclusion of the national pay award in 2020 the council again reinstated the Voluntary Living Wage rate of £9.30 for all affected staff and this was subsequently increased to £9.50 from 1 April 2021.

The Council is currently considering the financial implications of raising the minimum hourly rate of employees to £9.90 from April 2022 in line with the National Living Wage recommended hourly rate. This could impact on all employees on points 1 and 2 as they would potentially be below the £9.90 hourly rate when the 2020 and 2021 cost of living increases have been applied.

## **2.3 Corporate Leadership Team**

With the unprecedented challenges facing the council it was essential for the Corporate Leadership Team to have the skills and capabilities to deliver the changes required and given that the last review was in 2014, it was felt it was timely for this to happen. A review of the Corporate Leadership Team took place in 2020 and a revised structure was implemented.

The aim of the review was to put in place a Corporate Leadership Team that could lead the successful delivery of the Council plan, in line with the

Council's values and behaviours and meet the ongoing challenges that regularly arise. The key areas, which were addressed as part of the review were: -

- Increasing strategic capacity to shape and lead change across services.
- Ensuring the Council had the right levels of capacity, skills and alignment across services and management tiers to deliver the Council Plan priorities and associated plans.
- Providing the strategic capacity to strengthen the corporate approach to leading business prioritisation, planning, budget and performance management
- Strengthening and adding clarity to the governance, assurance, and compliance arrangements across the council
- Improving engagement and communications with people and teams across the Council.
- Further reducing silo working and embedding the 'One Council' culture.

Following the implementation of the Corporate Leadership Team structure in early December 2020, the council then reviewed the posts at tier four to align these to the new portfolios.

The tier 4 review was concluded and implemented from 1 September 2021, all posts are now filled using internal and external recruitment activity.

### **3. Senior Management Salaries**

#### **3.1 Senior Leadership Team - Benchmarking**

In deciding on appropriate salaries for the new Corporate Leadership Team in 2020, a benchmarking exercise was carried out into emerging management structures across district/borough councils in England. The research found that there was a move away from annual incremental progression through an agreed salary scale, to senior officers now being appointed on spot salaries.

The benchmarking and evaluation report recommended that the Chief Executive salary be uplifted (as this had not been reviewed for many years) and recommended a salary minimum of £112,500 to a maximum of £120,000.

Given the current financial burdens not only on the council but the wider economy, the current Chief Executive chose not to accept the increased salary level proposed and remains on the existing salary range (with annual pay rise being added to this lower level).

The Chief Executive and the Chief Officer pay award for 2021 was agreed in February 2022 with an increase backdated to 1 April 2021 of 1.5 %.

The salaries for the current Senior Leadership posts effective from 1 April 2021 are shown in the table below including the 1.5% pay increase.

<b>Post</b>	<b>Salary</b>
<b>Chief Executive</b>	£115,665
<b>Executive Director</b>	£95,964

### **3.2 Package over £100,000**

Where the salary package of any post exceeds £100,000, full council will be given the opportunity to approve the level of remuneration. The salary package is defined as base salary, any routinely paid allowances, bonus fees and other benefits in kind which are due under the contract.

### **3.3 New Corporate Leadership Team**

The new Corporate Leadership Team was implemented from December 1<sup>st</sup>, 2020 and comprised of six manager posts with new job roles. These all include an identical set of corporate responsibilities, together with a set of service specific responsibilities.

There was also a change to the Senior Leadership Team which saw the Director of Finance and Resources role being deleted.

The new Corporate Leadership Team roles were evaluated by a senior adviser to the Local Government Association, using the LGA Chief Officer method of job evaluation. The recommended salary bands took account of comparable roles in other local authority organisations.

To provide consistency with the approach taken to other roles within the Senior Leadership Team, all the new Service Director roles were appointed on a spot salary. Salaries at April 1<sup>st</sup> 2021 (including potential 1.5% pay increase to be agreed nationally)

<b>Post</b>	<b>Salary</b>
Service Director Housing	£78,662
Service Director Digital, HR & Customer Services	£78,662
Service Director Economic Growth	£78,662
Service Director Leisure, Culture & Community Services	£78,662
Service Director Corporate	£78,662
Service Director Finance	£78,662

These pay scales will be uplifted in line with the national pay award on an annual basis.

## **4. Terms and Conditions of Service**

The Chief Executive is employed under the terms and conditions of service of the Joint Negotiating Committee for Chief Executives of Local Authorities, and the Executive Directors and Corporate Leadership Team under the terms and

conditions of service of the Joint Negotiating Committee for Chief Officers of Local Authorities.

There are currently no additional local agreements relating to the employment of Chief Officers that represent a charge on the public purse, except for election duties (see following paragraph).

## **5. Additional Payments**

### **5.1 Election Duties**

The Chief Executive receives fee payments pursuant to his appointment as Returning Officer at elections. The fees paid in respect of parish, district and county council elections vary according to the size of the electorate and number of postal voters and are calculated in accordance with a fee structure determined by Derbyshire County Council. Fee payments for national and European elections are set by central government and are, in effect, not paid by the council, as the fees are reclaimed.

### **5.2 Acting Up Payments**

Acting up payments are made where an employee may undertake the full duties and responsibilities of a higher graded post. For employees at Scale 8 and above (which includes Chief Officers) a continuous qualifying period of four weeks will apply before payment can be made. Further details are set out in paragraph 8 of the Local Collective Agreement.

### **5.3 Honoraria**

An honorarium is payable in circumstances where an employee carries out additional duties which are at a higher level than those in their substantive post, but there is no entitlement to a higher salary. Further details are set out in Paragraph 9 of the Local Pay Agreement.

### **5.4 Telephone Rental**

A line rental may be paid to any Chief Officer who is expected to be contactable at home. The same payment is made to all eligible employees, regardless of grade.

A mobile telephone is provided to employees at the discretion of the Service Manager where it is considered appropriate for the delivery of the service. The cost of the monthly rental is paid as well as business related calls.

### **5.5 Car Mileage and Expenses**

All employees, including Chief Officers, can claim for mileage and expenses occurred for business reasons only. A review of car mileage payments was carried out in 2012/13 and a decision made by Cabinet in July 2013 to implement the HMRC rates for mileage claims. These revised payments have been applied to all employees claiming mileage since March 2014. Essential user allowance is no longer paid. Expenses are paid in accordance with the Council's Subsistence Policy.



## **5.6 Other financial benefits**

Post holders employed under the terms and conditions relating to Chief Executives and Chief Officers are not in receipt of any financial benefits that are not also available to other employees. They are exempt from receiving the following benefits which other employees receive:

- Unsocial hours payments
- Overtime Payments

The Chief Executive and Chief Officers do not receive any additional payments relating to performance related pay, bonuses or ex-gratia benefits.

## **6. Incremental Progression**

The policy of the council in respect of incremental progression is the same regardless of the level of the post and is set out at paragraph 1 of the Local Collective Agreement. On taking up employment, individuals will normally start at the bottom spinal column point of the appropriate grade; however, there is discretion to appoint at a higher point depending on skills, experience and any market factors which could impact on the ability to otherwise recruit to the post.

In the case of a Chief Officer appointment, this decision would be made by the Chief Executive. The Appointments Panel would make this decision for any Chief Executive appointment (in accordance with the council's constitution).

## **7. Lowest Paid Employees**

Following the implementation of Single Status and the NJC Job Evaluation Scheme, local grades were implemented. The lowest paid employees are determined by those whose job evaluation score was between 250-279, which placed them on Scale 1 at SCP 4-6. From 1 October 2015, the NJC for Local government Employees agreed that the bottom Spinal Column Point would be removed as this would be lower than the National Minimum Wage.

Following realignment of the local pay grades, the lowest grade currently as at 1 April 2020 starts at the new scale point 1 which is £9.24 an hour with a potential 2.75% pay award from 1 April 2021 taking the hourly rate to £9.50 per hour.

The hourly rate of £9.50 has been paid since 1 April 2020 in line with the Living Wage Foundation rate of £9.50 as announced in November 2020.

## **8. Relationship between salaries**

The ratio of the Council's top earner to that of its median paid employee is 6:1. This ratio has been based on year to date taxable earnings for the financial year 1 April 2021 to 31 December 2021.

## **9.Pensions**

### **9.1 Contributions**

Employees of the Council (including Chief Officers) pay a contribution to the Local Government Pension Scheme relative to their annual full-time equivalent pensionable pay (including pensionable allowances) (rates below as of April 2021):

Actual Pensionable Pay (based on latest pay x 12)	Employee Contribution rate
Up to £14,600	5.5%
£14,601 to £22,900	5.8%
£22,901 to £37,200	6.5%
£37,201 to £47,100	6.8%
£47,101 to £65,900	8.5%
£65,901 to £93,400	9.9%
£93,401 to £110,000	10.5%
£110,001 to £165,000	11.4%
£165,001 or more	12.5%

An assessment is undertaken on an annual basis to determine the contribution rate.

Following changes under the LGPS regulations in 2014, all employees now have an option to pay half contributions and build up half of the normal pension. This is known as the 50/50 section of the scheme and is designed to be a short-term option for when times are financially difficult.

Following the triennial re-evaluation of the pension scheme the Employer's contribution for Chesterfield will be 15.2% of pensionable pay from April 2021.

### **9.2 Discretions**

There are a number of discretions available under the Local Government Pension Scheme applicable to all employees. The aim of the Chesterfield Borough Council Policy on discretions is to ensure:

- fairness and equity in funding and contribution levels are adequate to meet future demands
- elected members are made aware of the financial consequences of decisions
- the age, skills and experience profile of the organisation is balanced

The discretions agreed for all employees are set out in the council's discretions policy.

### **9.3 Re-employment of employees in receipt of a pension**

The council has a statutory duty to appoint on merit and will always seek to appoint the best candidate for a position based on skills, knowledge, experience and abilities.

Under the terms of the Local Government Pension scheme, an employee who has retired from local government service and is in receipt of a pension may reapply for local government employment. However, where this happens, the pension may be subject to abatement, i.e. if the pension added to the new salary is higher than the original salary then the amount of pension will be reduced accordingly.

There are currently no re-employed pensioners in senior management positions and no previously employed Chief Officer has returned under a contract for services.

Where a former employee has left on the grounds of redundancy, the Council will apply the provisions of the Redundancy Modifications Order regarding recovery of the redundancy payment, if relevant.

## **10. Payments on Termination of Employment**

Payments on termination of employment will be made under the LGPS or in accordance with the discretions set out above. Other payments may be made where the council has specific legal advice to the effect that a payment may be necessary to eliminate risk of claims against the Council.

Any severance payment currently over £100,000 must be agreed by full council.

The Restriction of Public Sector Exit Payments Regulations 2020 (Exit Cap Regulations) came into force on 4 November 2020. These regulations limit the value of public sector employee exit packages to a cap of £95,000. The Government announced on 12 February 2021 that the Exit Pay Cap Regulations had been revoked due to their "unintended consequences".

The Council did not make any capped payments under the Regulations for employees who left between 4th November 2020 and 12th February 2021.

## **11. Publication of Information**

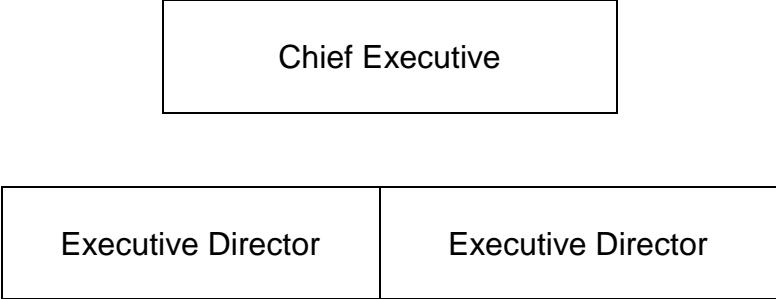
Information relating to the salaries of senior management is already published on the council's website. This policy statement, which has been approved by Full Council, will also be made available and placed on the website by 31 March 2022.

## **12. Contact details**

Employees can be contacted on 01246 345345 or at [chesterfield.gov.uk](http://chesterfield.gov.uk)

Corporate Management Structure – 2022/2023

Senior Leadership Team



Corporate Management Team

Service Director Economic Growth	Service Director Housing
Service Director Corporate	Service Director Leisure, Culture & Community Services
Service Director Digital, HR and Customer Services	Service Director Finance